



## What is a GLN?

To put it simply, GS1 Global Location Numbers ([GLNs](#)) are “an **IC or Passport Number that identify locations, entities and assets**”.



**Want to get GLNs?**  
**GS1 Malaysia offers GLN Membership Licenses!**  
Getting your **GLN License** is **Quick & Easy!**

### Steps to Register for your GLNs:

1. **Fill in the GLN application here:**  
<https://www.gs1my.com/member/r1/node/20> and submit together with **copies of your company registration documents.**
2. **In 3 to 5 working days,** receive your GLN and start optimizing your business operations!

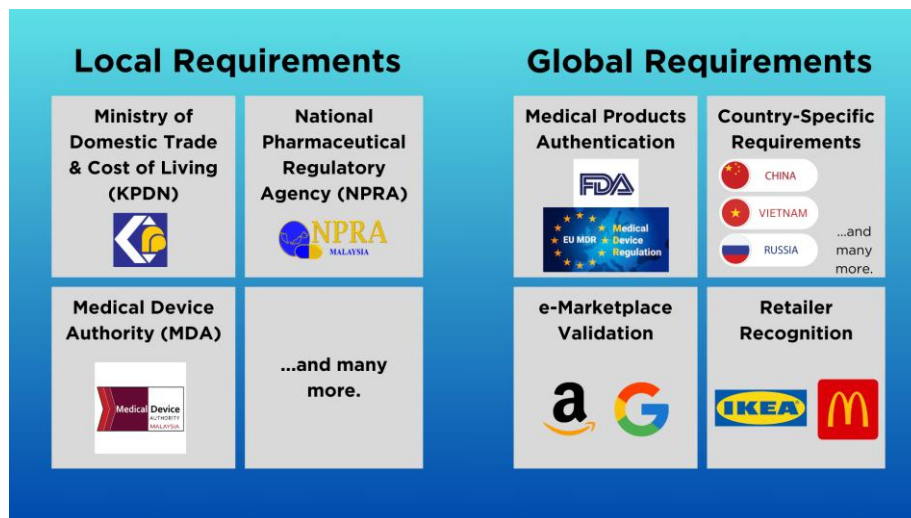
## Why are GLNs Important?

GS1 GLNs provides businesses with the ability to know **who is involved** in transactions and **where things are** located throughout the supply chain. This helps with:

- i. Fulfil **sustainability regulations**, such as **EUDR, ESPR, DPP**, etc.
- ii. **Keeping track of where your products are**,
- iii. **Making your processes simpler & more efficient**, and
- iv. **Providing greater visibility** of your **transactions**.

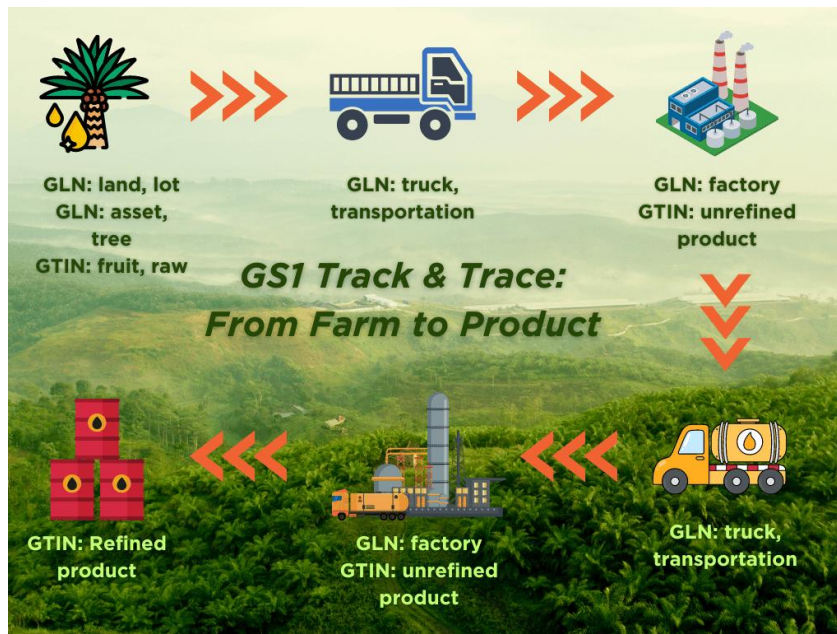
In a nutshell, GS1 GLNs allow for greater **accountability, accuracy, efficiency**, and **visibility** along the supply chain.

GS1 GLNs are so important that **many brand owners, retailers, and regulations around the world leverage on GLNs**:



Track movement across **every stage of your supply chain with GLNs:**

**GLN Data stored on GS1 GLN Registry!**



- 1** Become a GS1 GLN License Subscriber and after assigning GLNs to your:

  - i. Entities
  - ii. Locations
  - iii. Assets

Provide the details to GS1
- 2** Go to <https://databank.gs1my.com> and select "GLN". Key in your GLN number and click the Search icon
- 3** Validate your GLN details

GLN Information

Location Name: GS1 Malaysia Berhad  
Licensee Address: Wisma FMM, No. 3, Persiaran Dagang, PJU 9, Bandar Sri Damansara, 52200 Kuala Lumpur  
Company Name: GS1 Malaysia Berhad  
Licensee GLN: 614-600000009  
Issuer GLN: 860700000011

Join our training now to learn more about GLNs!



## How GS1 Global Location Numbers (GLN) Enable Compliance to Green Regulations

Date	Time	Highlights
<p><b>Every Friday</b></p> <p><i>* GS1 Malaysia reserves the right to merge sessions based on minimum attendance.</i></p>	<p><b>11.00 AM</b></p> <p><b>-</b></p> <p><b>11.45 AM</b></p>	<ul style="list-style-type: none"> <li>Learn how GLN allows you to <b>comply with international regulations and directives</b> such as EUDR, ESPR, CEAP, Digital Product Passport (DPP), CBAM, <u>HonestMark</u> etc. to fulfil <b>Sustainability and Circularity</b>.</li> <li>Learn how <b>upstream producers</b> (e.g. ranches, plantations, etc.) use GLN to <b>track and monitor their plots of land, individual trees, plants, and animals.</b></li> </ul>

**JOIN US NOW ON ZOOM!**



Together, let's pave the way for a sustainable future!

**GS1 Malaysia Berhad** (1201396-K)  
(A Company Limited by Guarantee)  
Wisma FMM, No 3, Persiaran Dagang, PJU 9  
Bandar Sri Damansara, 52200 Kuala Lumpur  
**T** + 603 6286 7200 **F** + 603 6276 1042  
**WhatsApp** +6011 1616 8228 , +6014 3933 228  
**E** [gs1malaysia@gs1my.org](mailto:gs1malaysia@gs1my.org) , [membership@gs1my.org](mailto:membership@gs1my.org)  
[www.gs1my.org](http://www.gs1my.org)